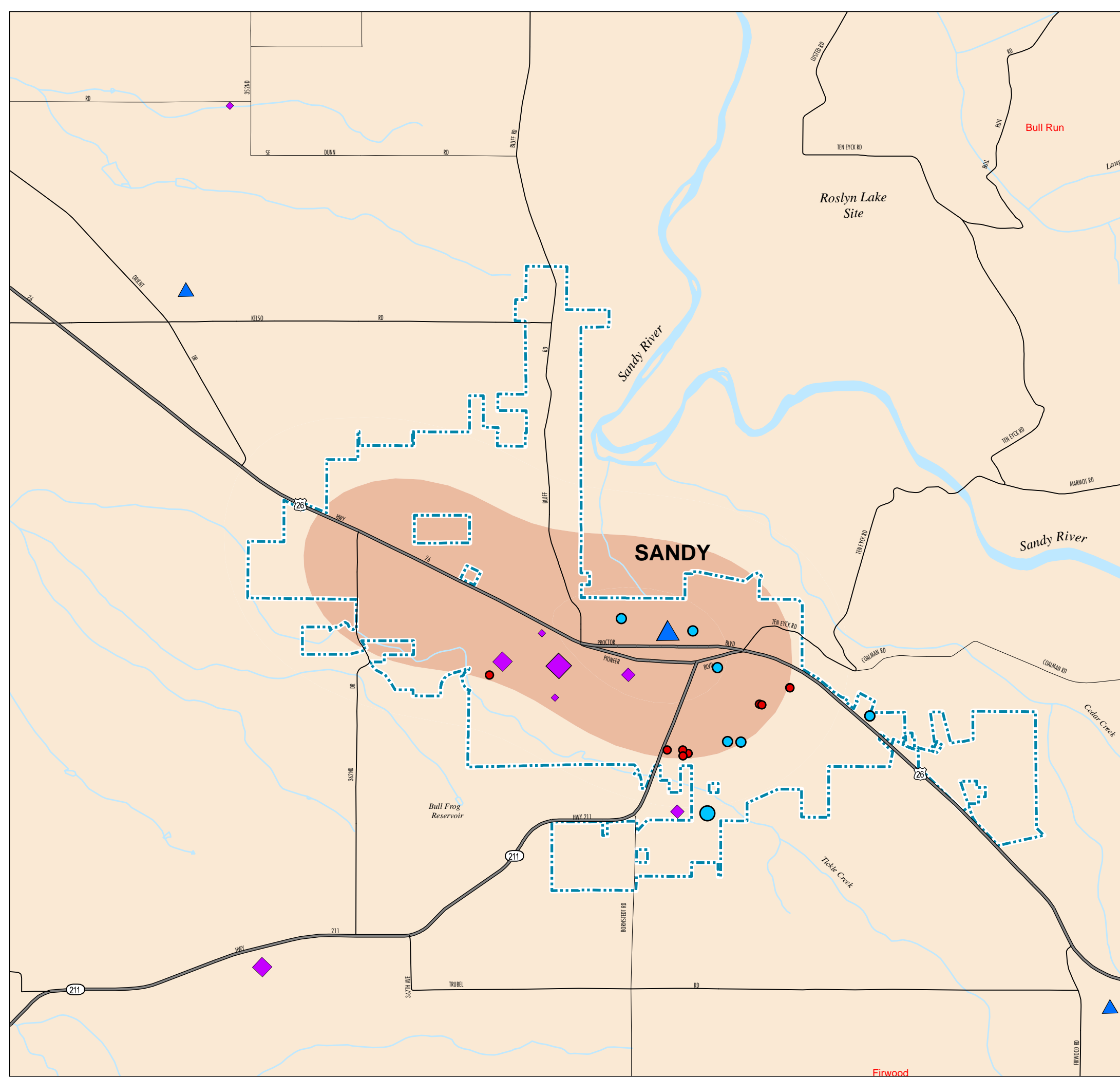
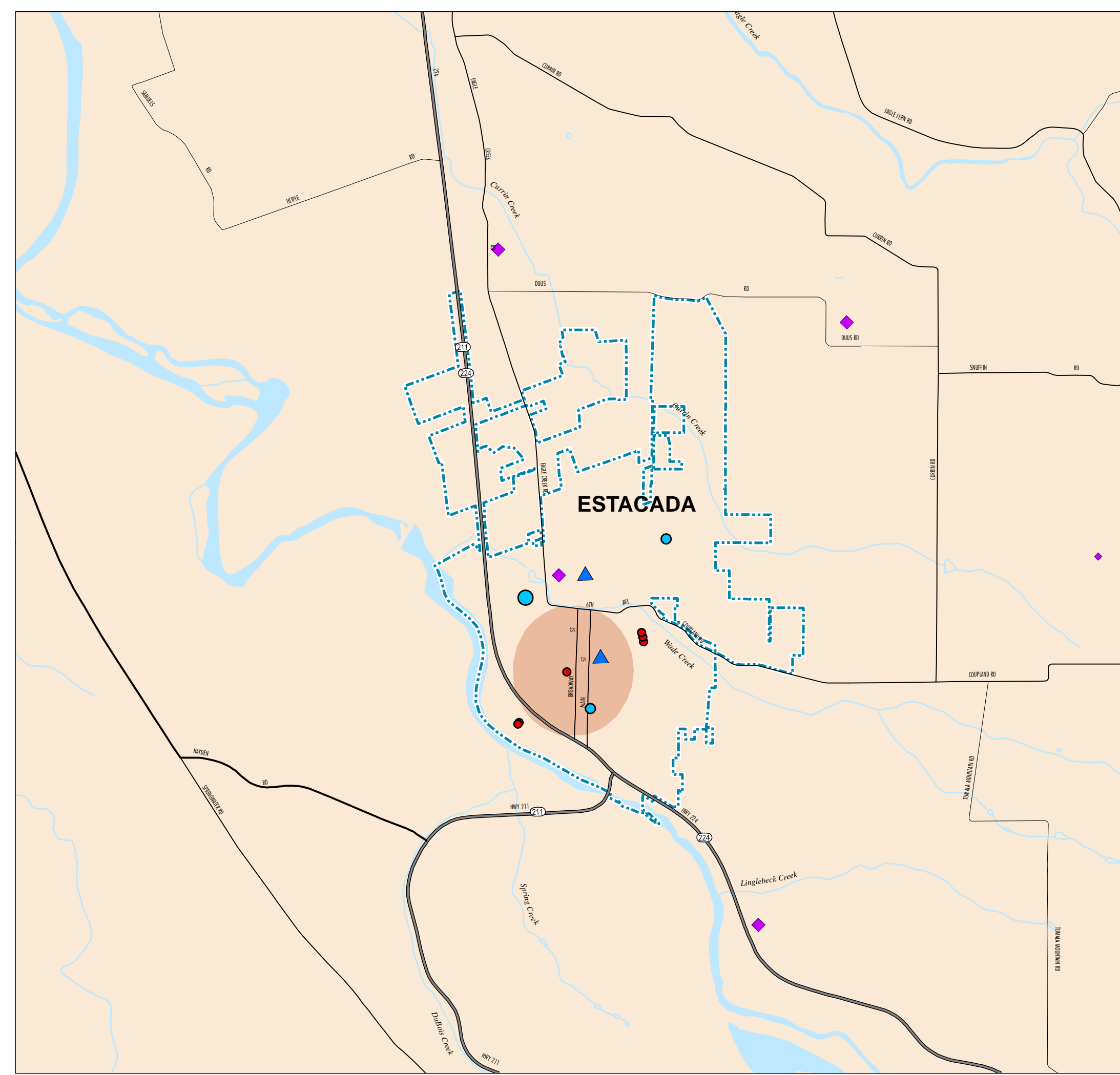
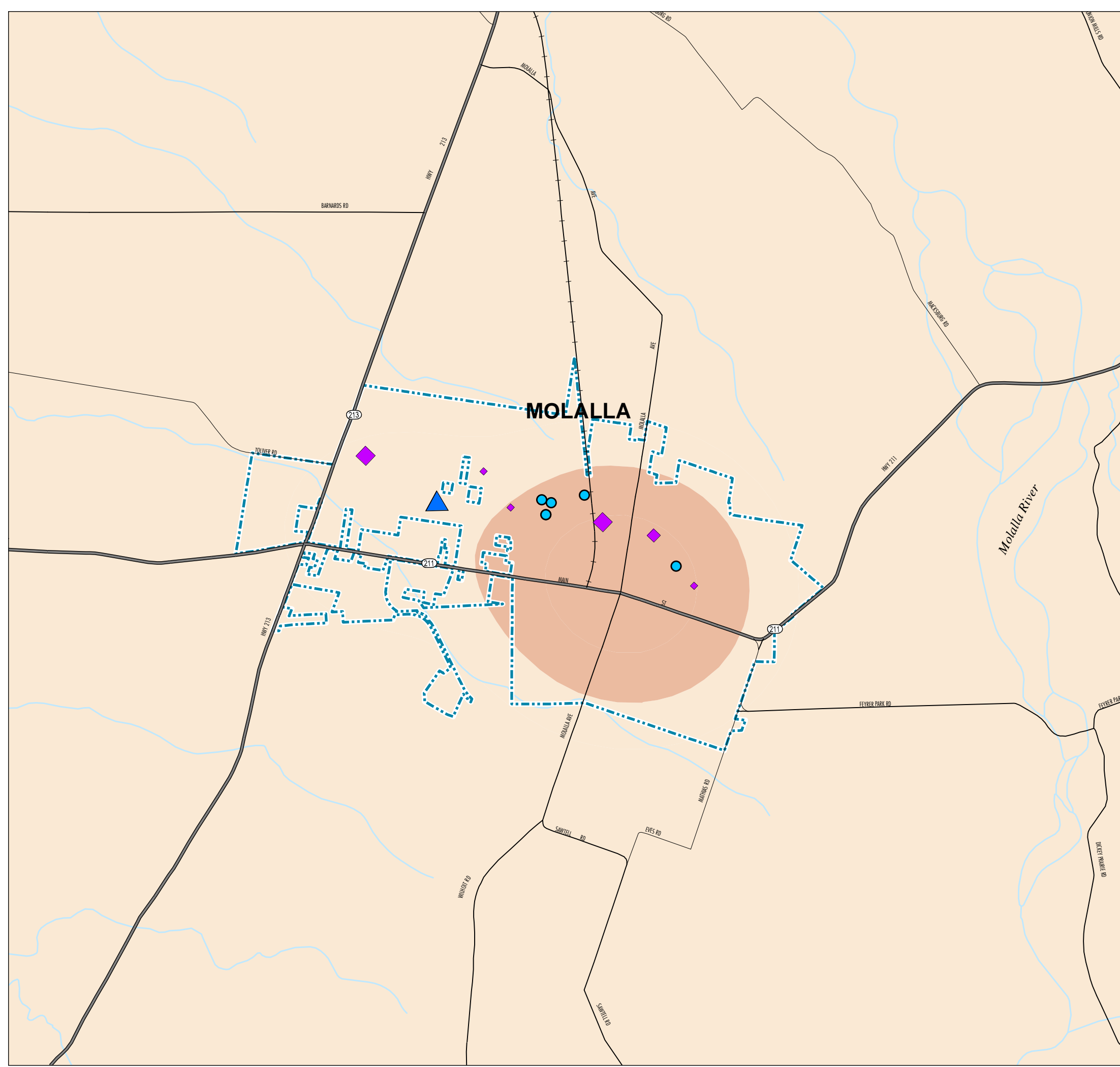
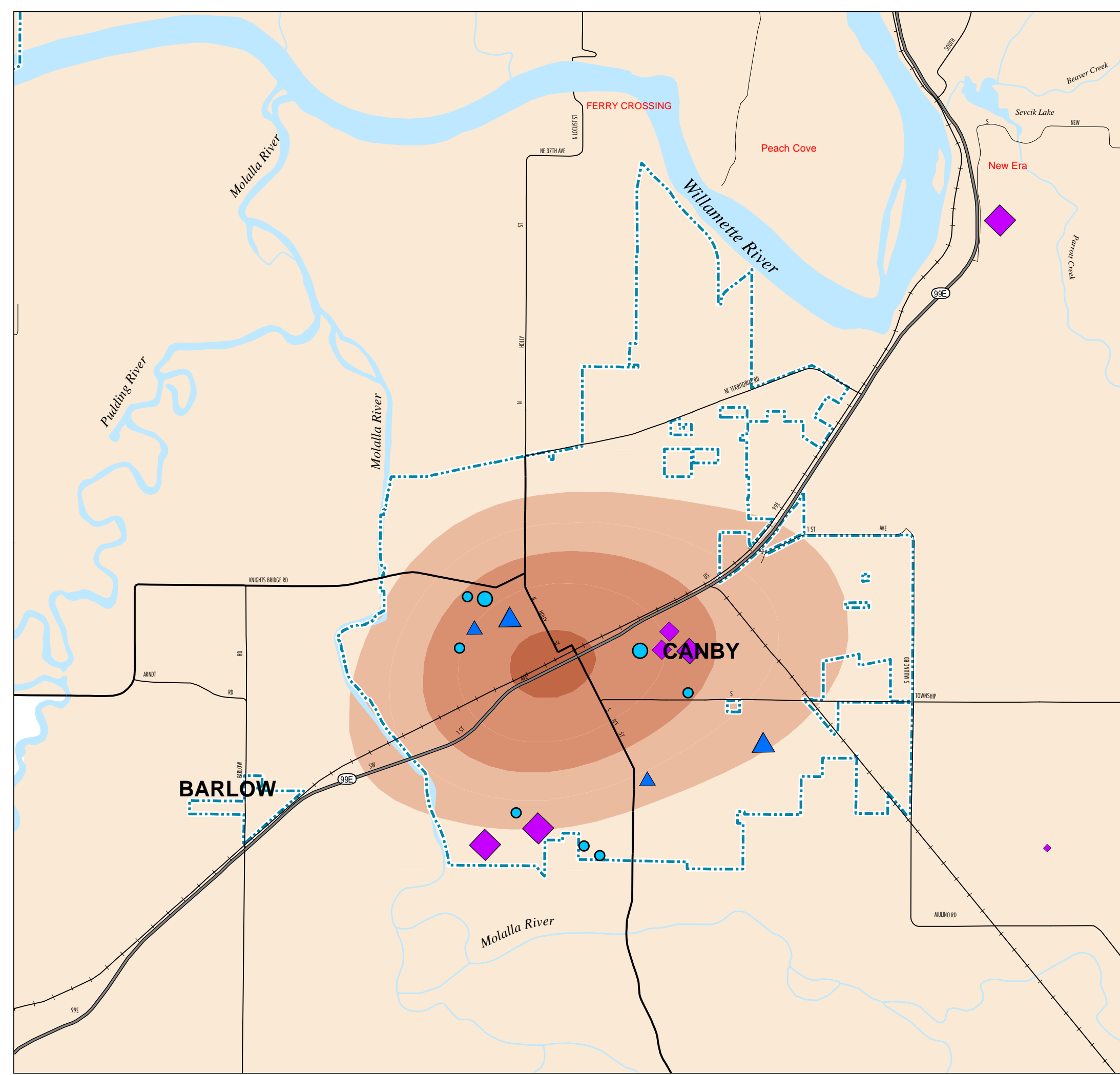
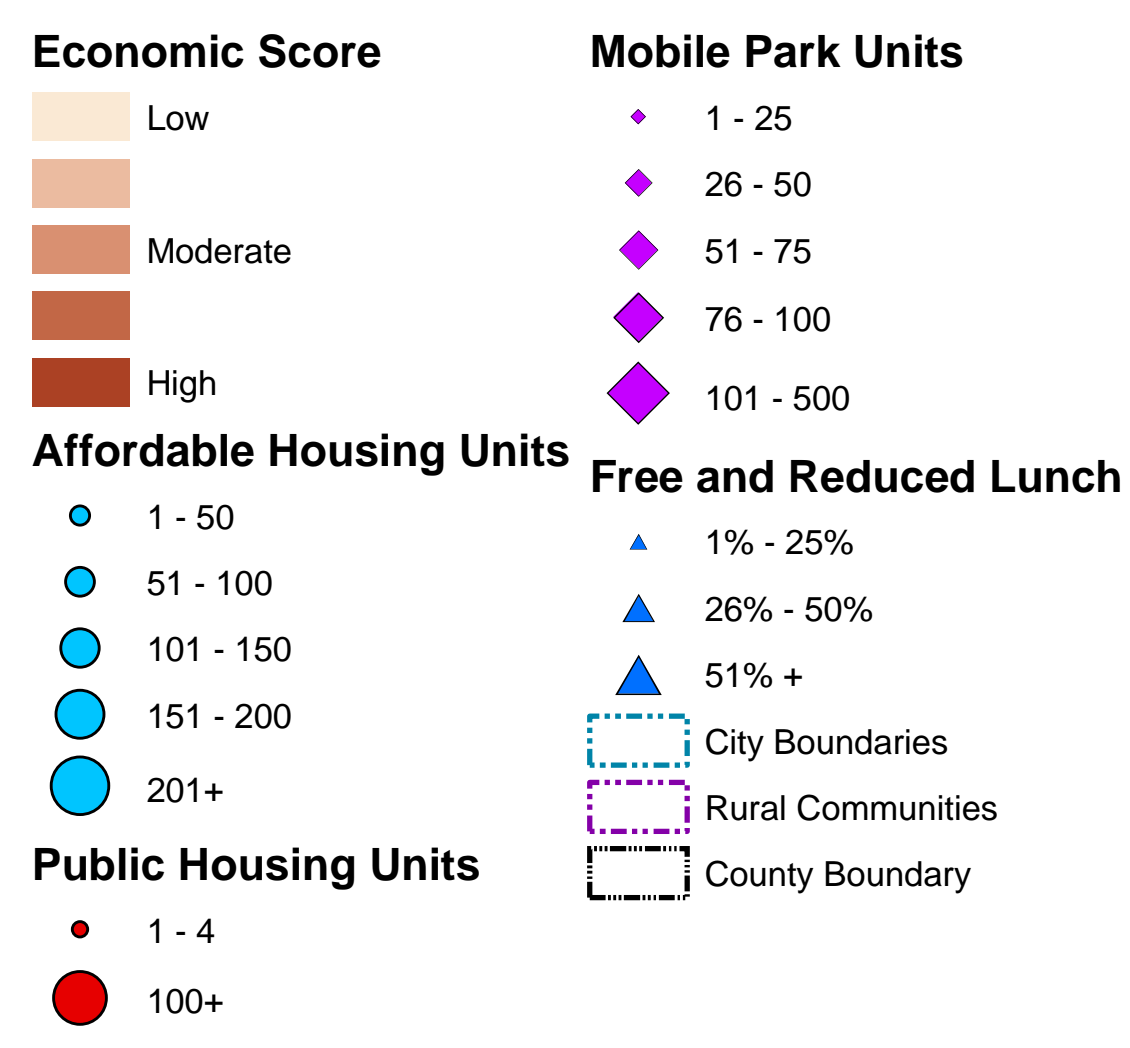
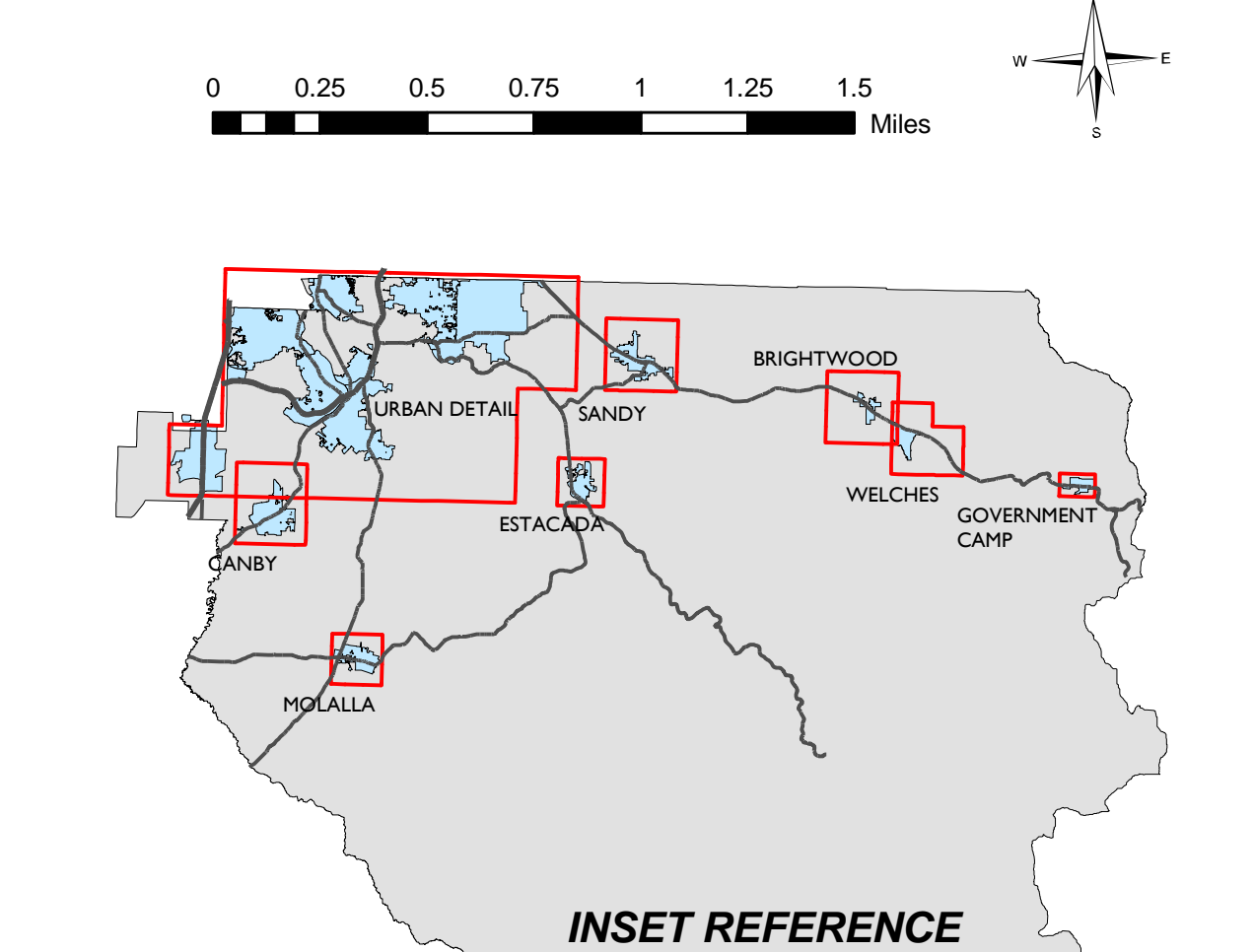
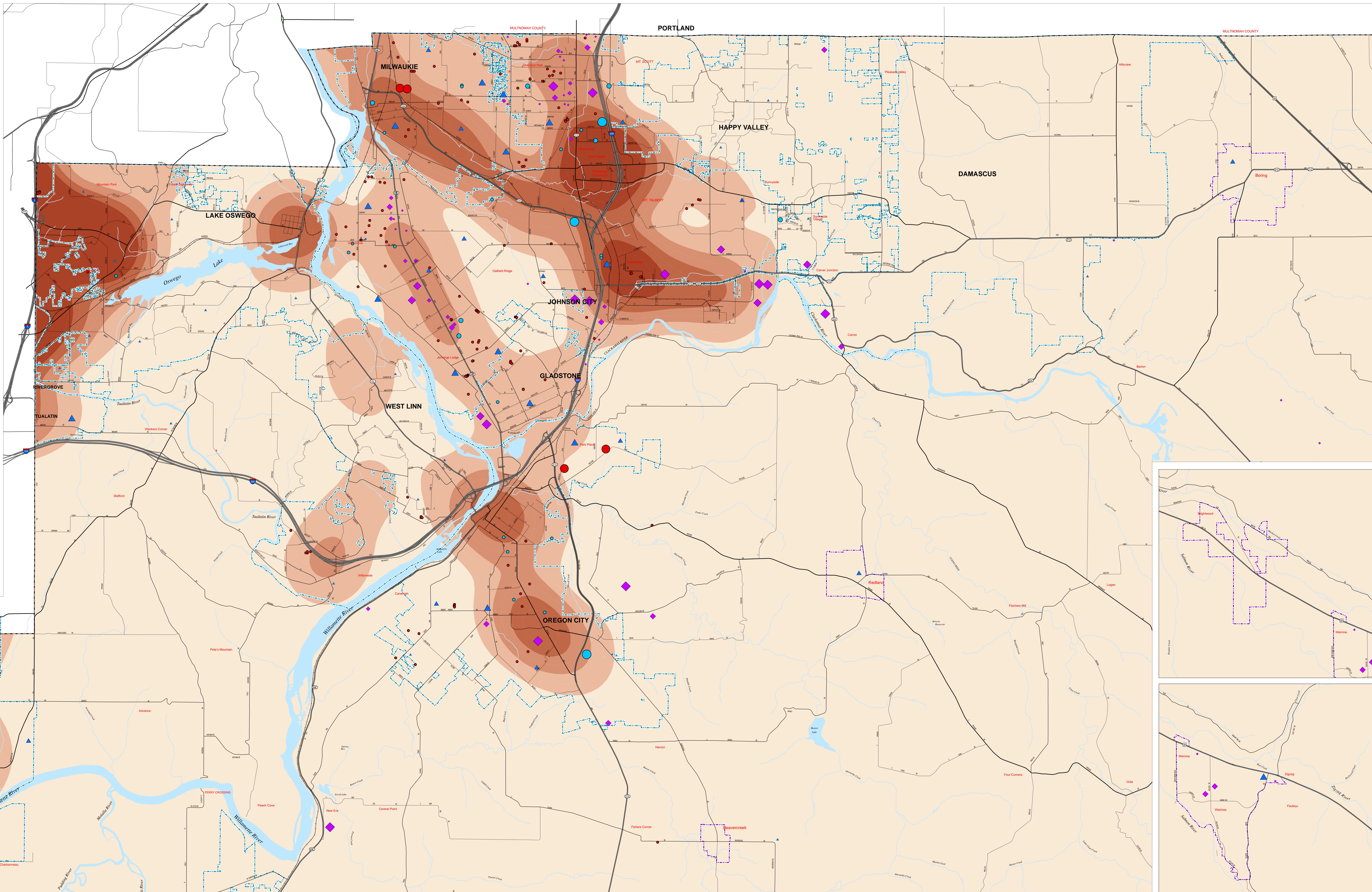


### ECONOMIC OPPORTUNITY MAP CLACKAMAS COUNTY



### Clackamas County Opportunity Scores - Methodology

Category	Weight	Indicator	Relative Weight
Education	33%	Average ODE Report Card Score (Elementary, Middle, High)	33%
		Outstanding 3 points, Satisfactory 2 points, In Need of Improvement 1 point	33%
		Proximity to Elementary & Secondary Schools	33%
Economic	66%	Density (by number & size of firms) of higher-wage industries in 3-mile radius	33%
		Density (by number & size of firms) of lower-wage industries in 3-mile radius	33%
		Proximity to Adult Education Resources	33%
Health Care	100%	Proximity to Health Care Providers	100%
		Proximity to Transit	100%
		Proximity to Parks	33%
Community	33%	Proximity to Food Sources (except convenience stores)	33%
		Proximity to other Community Resources	33%
		Proximity to Public	33%



**CLACKAMAS**  
GEOGRAPHIC INFORMATION SYSTEMS

DEPARTMENT OF INFORMATION SERVICES/GEOSPATIAL INFORMATION SYSTEMS  
1511 LIBRARY COURT  
OREGON CITY, OREGON 97133

MAP CREATED OCTOBER 2011

