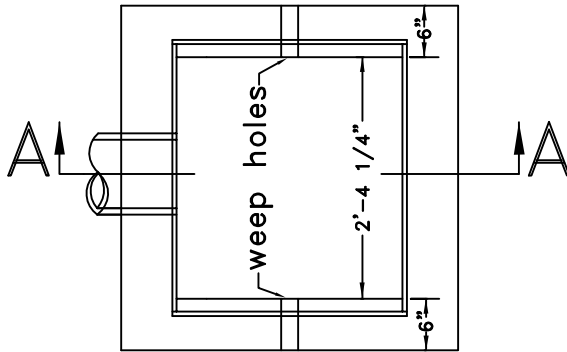
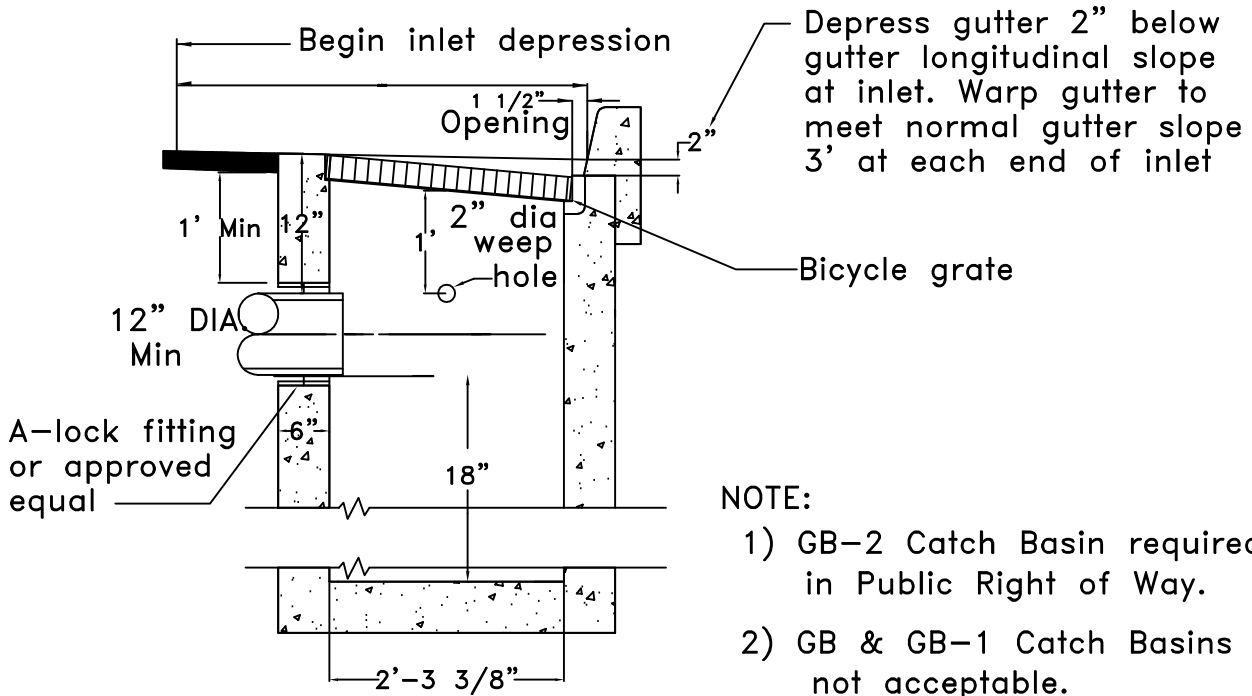


CATCH BASIN

NOTES:
Use 3000 lb concrete
2" to 4" slump



PLAN



NOTE:
1) GB-2 Catch Basin required in Public Right of Way.
2) GB & GB-1 Catch Basins not acceptable.

SECTION A-A



TITLE: STANDARD CATCHBASIN		SHEET: 1 OF 1
FILE NAME: SWM-0001	DRAWN BY: WDK	REV. DATE: 07/20/2001
SCALE: NOT TO SCALE	DATE: 8/4/94	CHECKED BY: MN