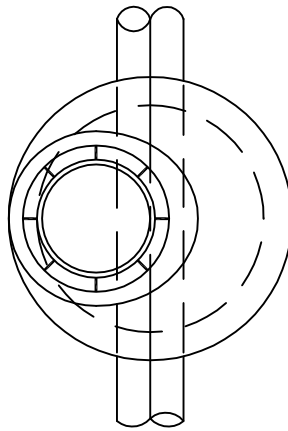
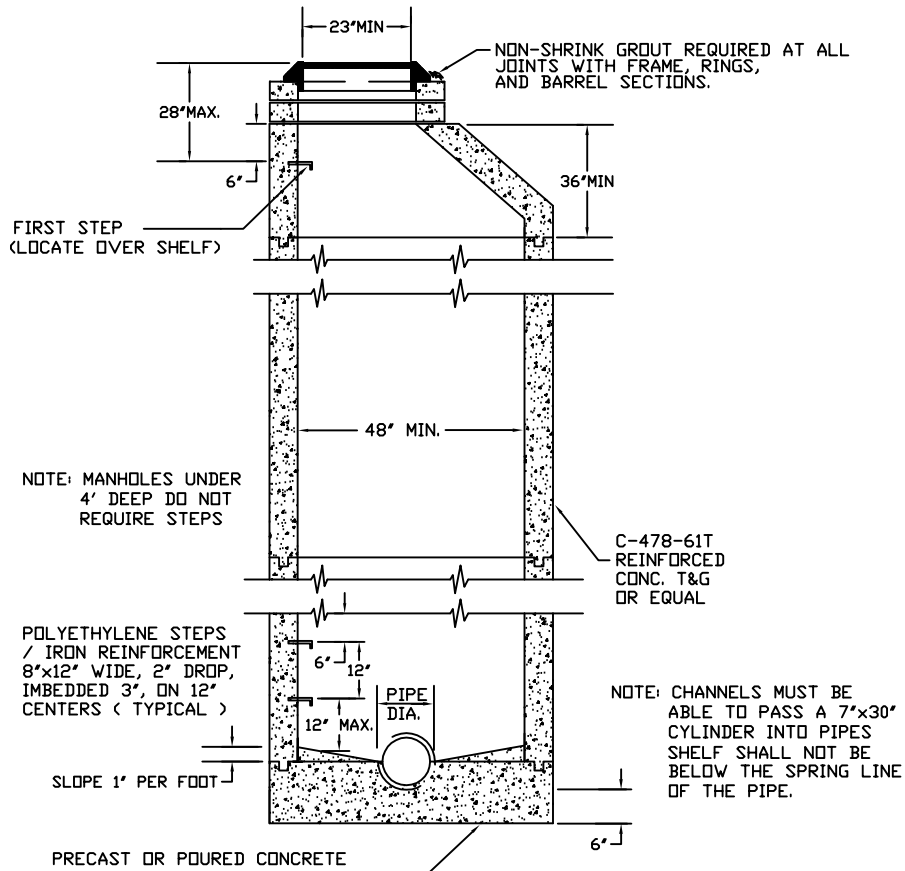


PROVIDE STD. RUBBER RING JOINT WITHIN 1' - 6" OF OUTSIDE FACE OF MANHOLE WALL



NOTE: MANHOLE LID TO BE 6" ABOVE FINISH GRADE IN EASEMENTS



TYPICAL MANHOLE
6" TO 30" PIPE



**WATER
ENVIRONMENT
SERVICES**
A Department of Clackamas County

TITLE: TYPICAL MANHOLE		SHEET: 1 OF 1
FILE NAME: SWM-0008	DRAWN BY: WDK	REV. DATE: 10/11/94
SCALE: NOT TO SCALE	DATE: 10/6/94	CHECKED BY: MN