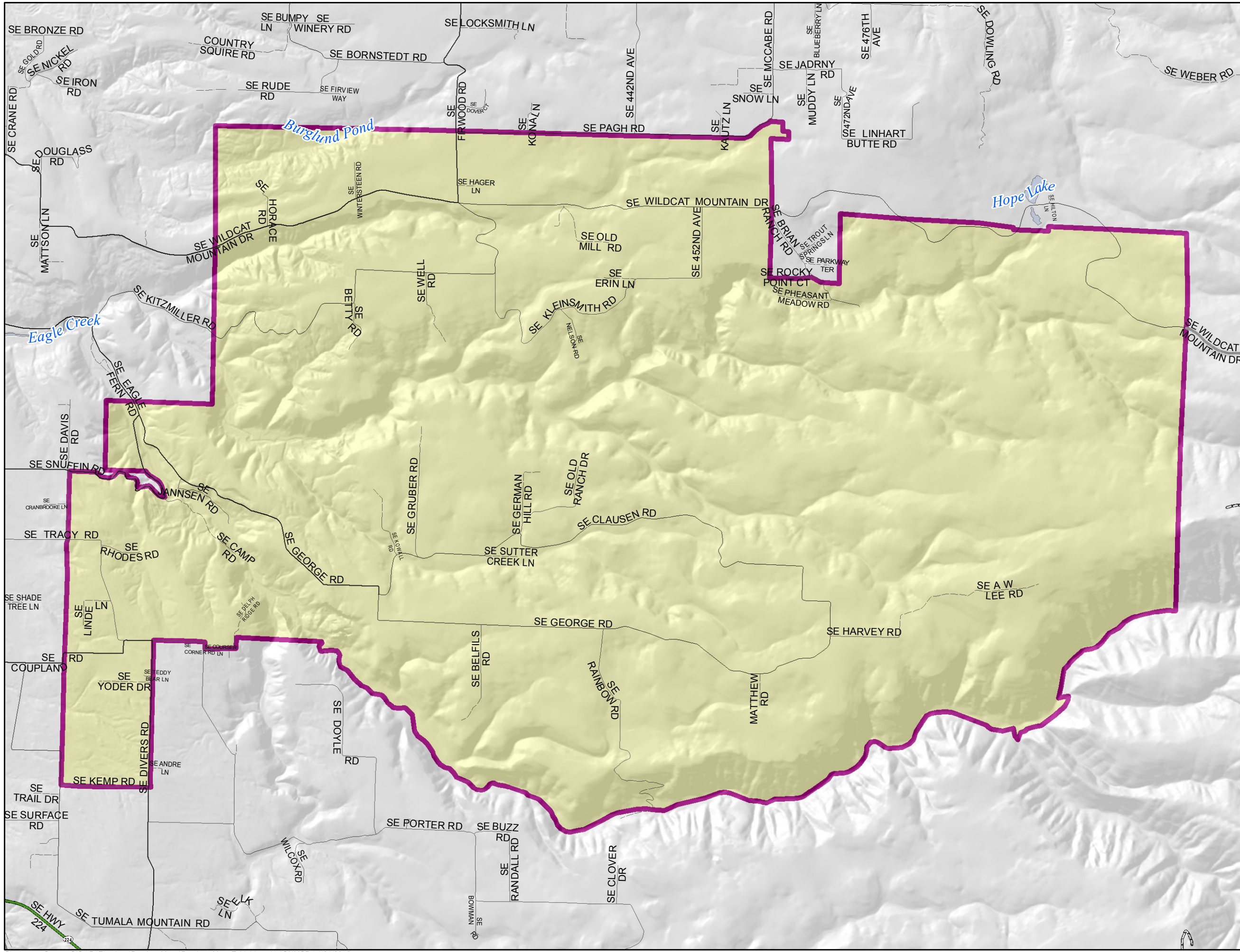


# VOTER PRECINCT 372

State Senate District: 26  
 State House District: 52  
 U. S. Congressional District: 3



**City Boundary**

**County Boundary**

**Streets**

- Freeway
- Expressway / State Highway
- Major Arterial / State Highway
- Major Arterial
- Minor Arterial
- Collector
- Connector
- Local
- Private w/ Address
- Alley
- Private w/out Address
- Driveway, School Roads
- Railroad
- Unnamed park roads, school roads
- Trails, ferry crossings
- Forest Service Paved
- Forest Service Aggregate Road
- General dirt, unknown road or trail
- Freeway Ramp
- Voter Precinct



GEOGRAPHIC INFORMATION SYSTEMS

DEPARTMENT OF INFORMATION SERVICES/GEOGRAPHIC INFORMATION SYSTEMS  
 121 LIBRARY COURT  
 OREGON CITY, OREGON 97045

The information on this map was derived from digital databases from Clackamas County's GIS. Care was taken in the creation of this map but is provided "as is". Clackamas County cannot accept any responsibility for any errors, omissions, or positional accuracy, and therefore, there are no warranties which accompany this product. Although information from Land Surveys may have been used in the creation of this product, in no way does this product represent or constitute a Land Survey. Users are cautioned to field verify information on this product before making any decisions.